



INVERGARRY & FORT AUGUSTUS RAILWAY MUSEUM

2015 BRIEFING NOTES

The Station Project

The Station Project is a community based project which aims to create a museum dedicated to the Invergarry and Fort Augustus Railway on the site of the old Invergarry station, creating replicas of the original buildings, relaying the track as far as possible and displaying relevant artefacts. There will be a short demonstration line where visitors will be able to experience a heritage train ride.

The project is wholly run by volunteers and is already attracting considerable numbers of visitors. An indication of the level of interest can be seen from the number of photos appearing on internet photo sharing sites such as Flickr. It is expected that the museum, when open, will attract an additional 6000 - 8000 visitors to the area.

Last Year



In 2014 the museum became a company limited by guarantee and moved towards charitable status. A wooden hut was erected to act as the site office. Network Rail moved in to design the trackwork and deliveries of rail and sleepers bought from Network Rail commenced. For a week a Case excavator worked to clear and level the entire site trackbed, then 300 tons of ballast was delivered which enabled sleepers to be pre-positioned at platform 1. The two big trees on the platform were taken down, cut into 5 ton pieces and removed from the platform. A mechanised p-way trolley was purchased to assist with tracklaying. A new station name board was constructed off site and a reproduction lantern purchased, both are due to be erected on the platform in 2015.

The 2015 Programme



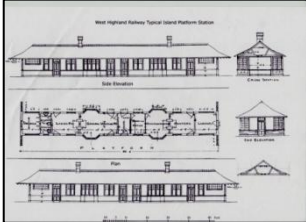
Network Rail – completion of phase 2 laying track to platform 1.
Commence phase 3, installing point work at eastern end of platform.
Preparation trackbed at platform 2 for laying track.

Services – SSE have agreed in principal the details for an electrical supply with probable connection late summer. Water and sewerage will move to planning during the year.



Platform – level platform and dress with red granite chips. Erect station nameboard and lantern. Prepare station building foundation area.

Signal Cabin – clear pit and construct founds (spring). Erect signal cabin and in conjunction with Network Rail commence signalling works.



Station Building – Architect to complete design work and move to Heritage Lottery application. Building design to be externally a replica of the original.



Restoration – the museum expects to take delivery of two Caledonian Railway wagons built circa 1910 in early February. These will be restored on site, one to running order, the other for display.

WEB SITES

For the museum www.invergarrystation.org.uk

For the project www.stationproject.org.uk

MEMBERSHIP

Membership is available on line via either of the web sites.

VOLUNTEERS

Volunteers to work on the project are always welcome.

CONTACT US

e-mail invergarrystation@gmail.com*



